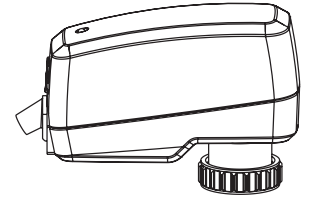


TA-Slider 160 KNX TA-Slider 160 KNX R24



0°C - +50°C

32°F - +122°F

(5-95%RH, non-condensing)



0°C - +120°C

32°F - +248°F



-20°C - +70°C

-4°F - +158°F

(5-95%RH, non-condensing)

Software
A
EN 60730

Type
1AB
EN 60730

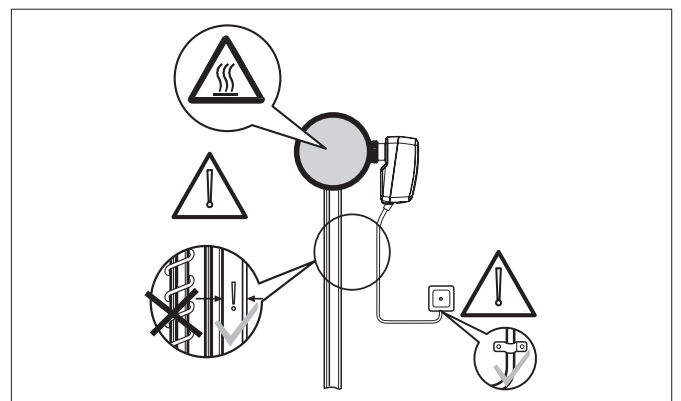
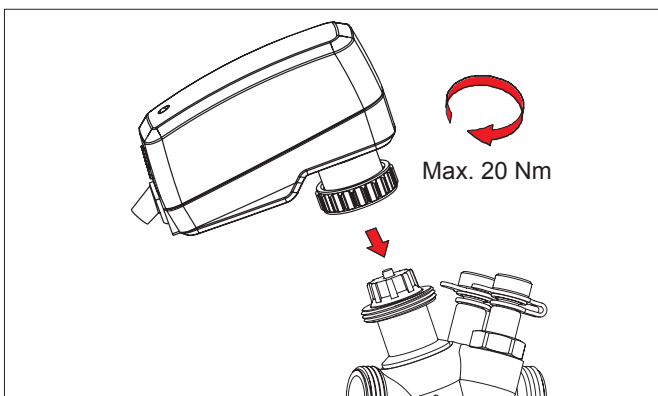
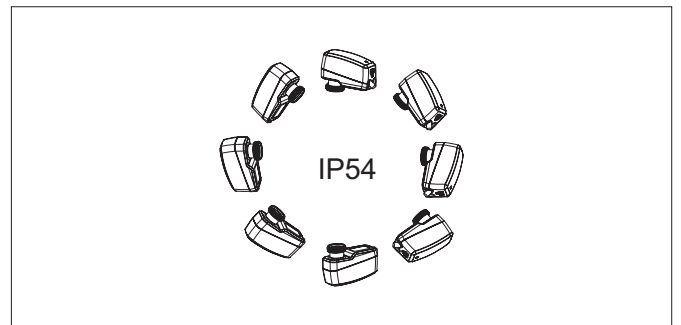
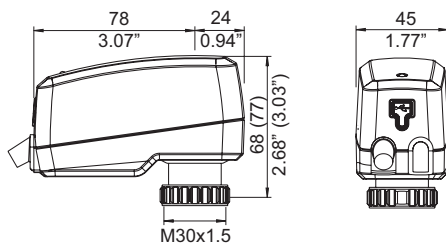
IP54
EN 60730

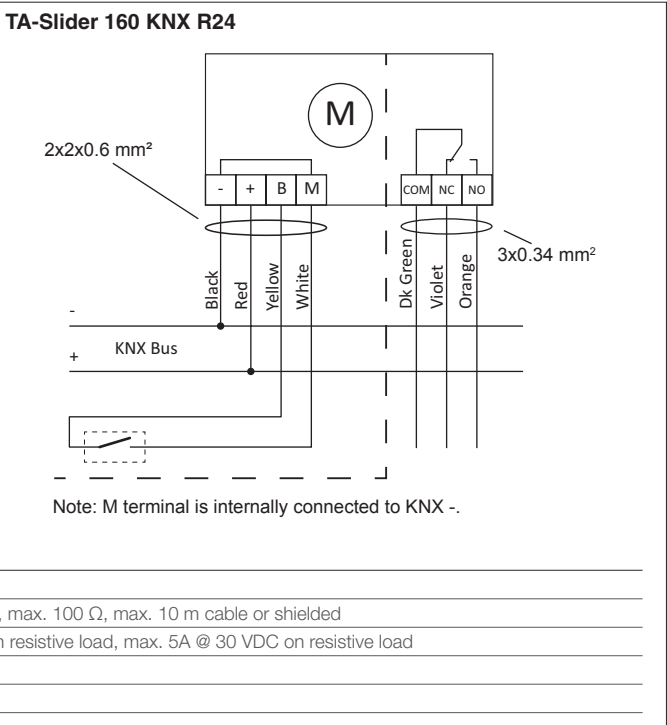
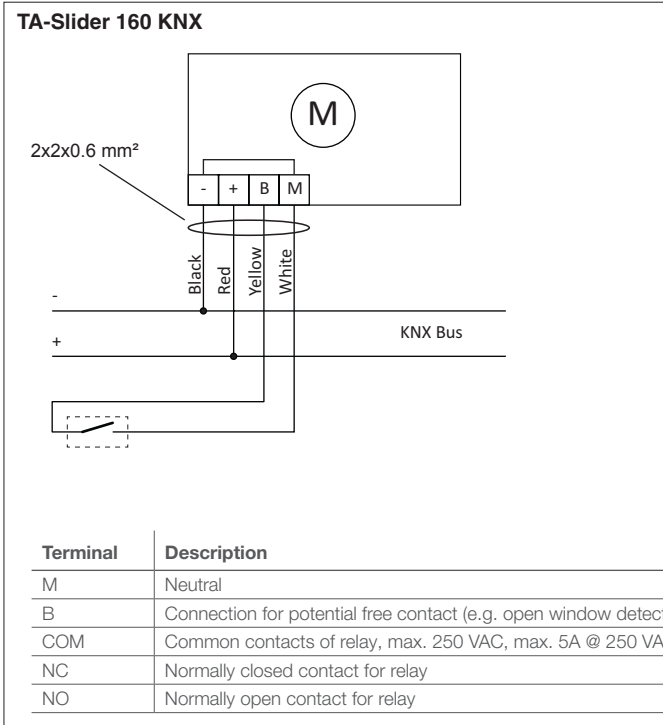
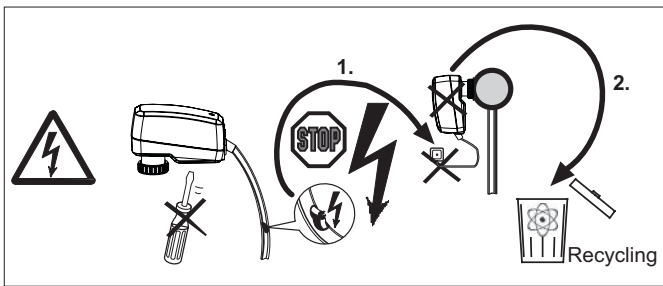


CE
EN 60730



TA-Slider 160 KNX (TA-Slider 160 KNX R24)





Quick start

Protocol Implementation

www.imi-hydronic.com
→ TA-Slider 160

LED

LED	Symbol	Color	Function
BLUE/RED		Blue	Power
		Red	Power
		Blue	Power
		Red	Power
		Blue	Power
		Red	Power
VIOLET		Violet	Power
		Violet	Power
		Violet	Power
		Violet	Power